

# Installation Instruction

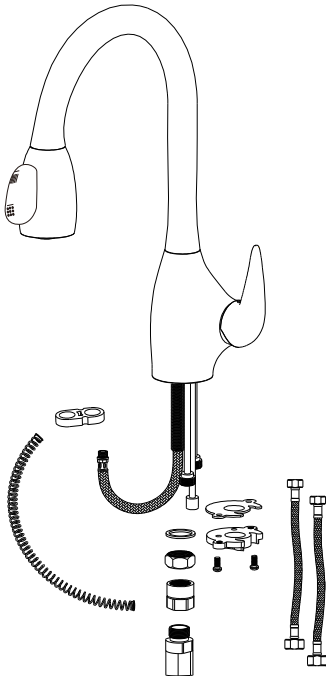
## Single Handle Pull-down Kitchen Faucet

# KPS3035



### Before Your Installation

Check to make sure you have the following parts indicated below:



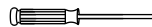
### Tools You Will Need



Small spanner  
(supplied)



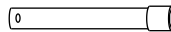
Adjustable wrench



Phillips screwdriver



Aerator spanner  
(supplied)

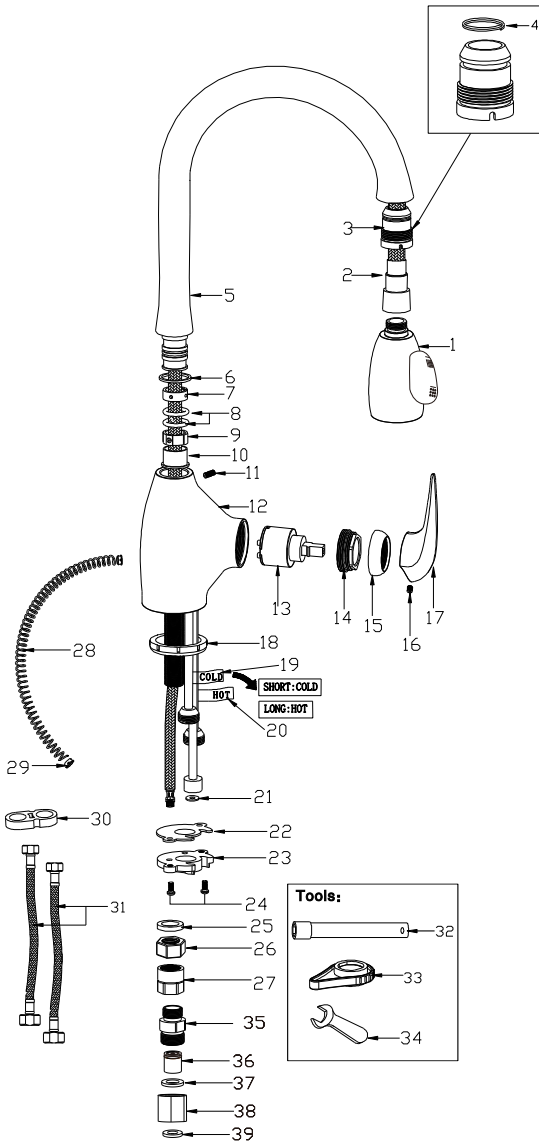


Spanner for body  
(supplied)

# Replacement Parts

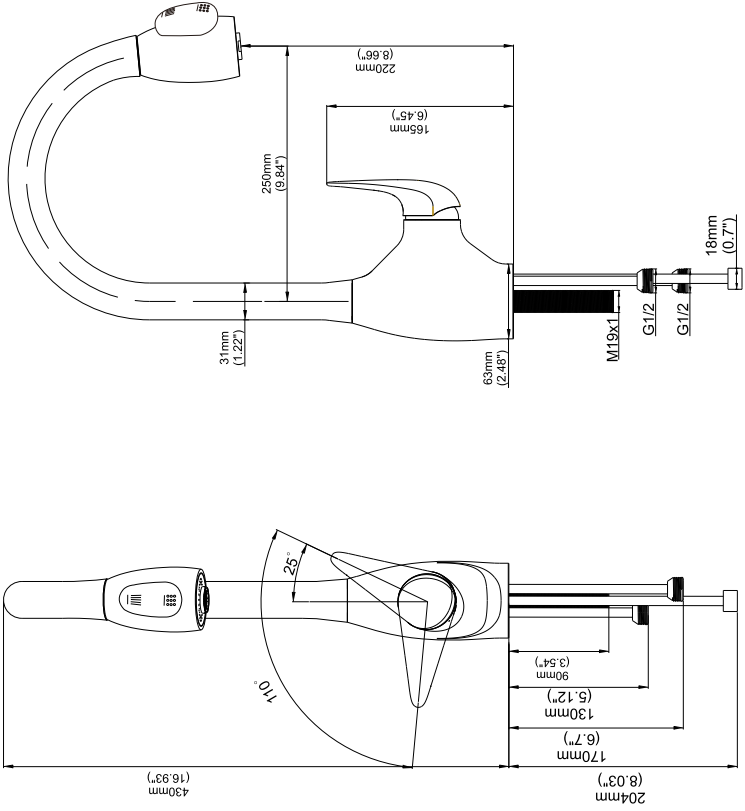
Keep this manual for ordering replacement parts.

## NO NAME

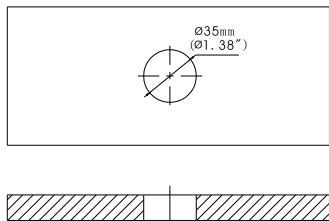


1. Nozzle
2. Nylon hose
3. Plastic cover
4. Spring ring
5. Spout
6. Anti-friction gasket
7. Plastic cover
8. O-ring
9. Plastic cover
10. Noices muffler
11. Screw
12. Faucet body
13. Cartridge
14. Lock nut
15. Cartridge holder
16. Screw
17. Handle
18. Bottom gasket
19. Cold water mark
20. Hot water mark
21. Flat gasket
22. Rubber gasket
23. Stainless steel gasket
24. Screw
25. Steel gasket
26. Hexagon nut
27. Plastic nut
28. Spring
29. Anti-friction gasket
30. Spring holder
31. Hose
32. Spanner for body
33. Spanner for aerator
34. Small spanner
35. Bushing(male thread)
36. Check valve
37. Gasket
38. Bushing(female thread)
39. Gasket

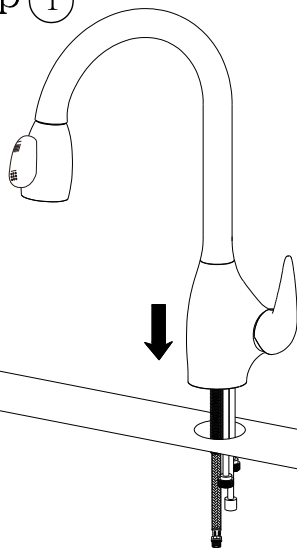
# Product Dimension Drawing



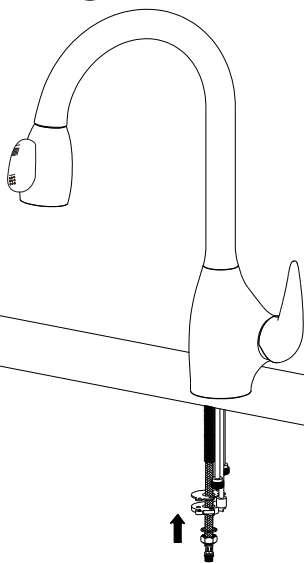
# Faucet Installation Procedures



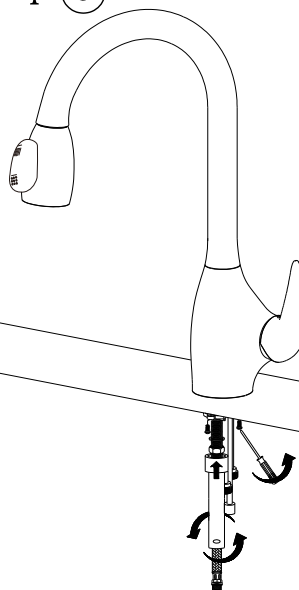
step ①



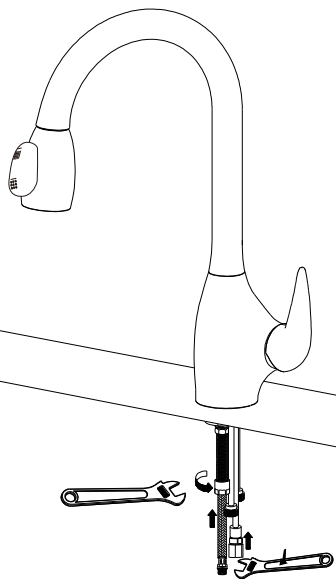
step ②



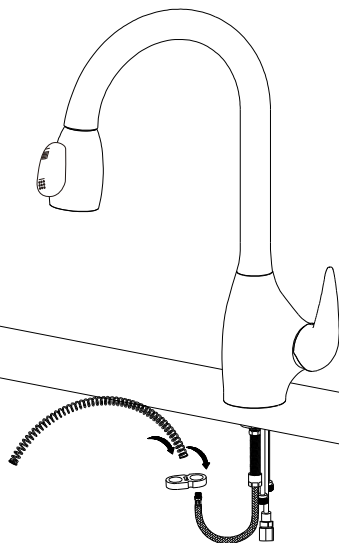
step ③



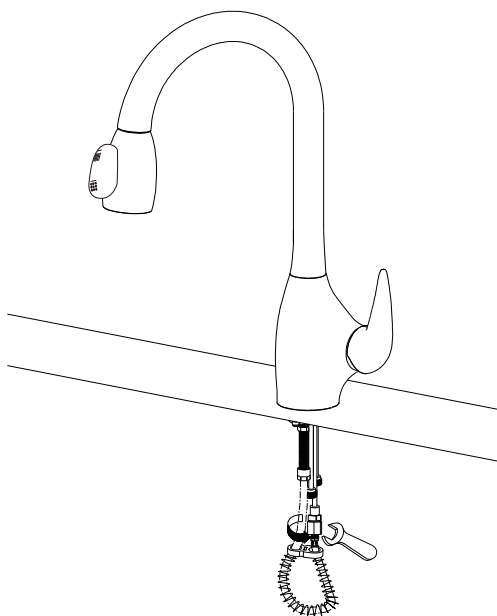
step ④



step ⑤



step ⑥

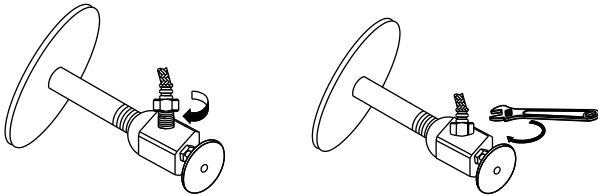


step ⑦

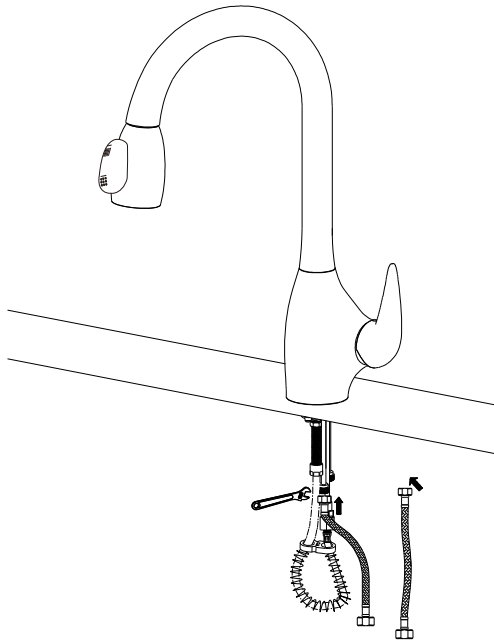
## **IMPORTANT!**

Flush debris from the Hot and Cold angle valves by:

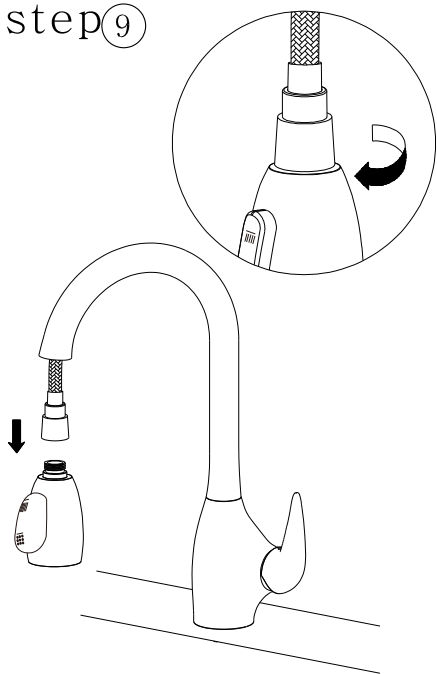
1. Connect water supply line to the angle valve.
2. Put the other end of the water supply line into a bucket and turn on water to flush.
3. Repeat step 2 with the other supply line.
4. Connect the Hot and Cold water lines to the faucet. Tighten securely, but do not over-tighten.



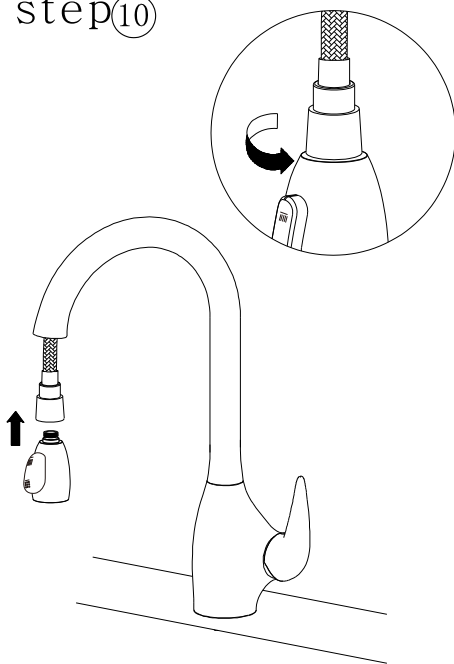
step ⑧



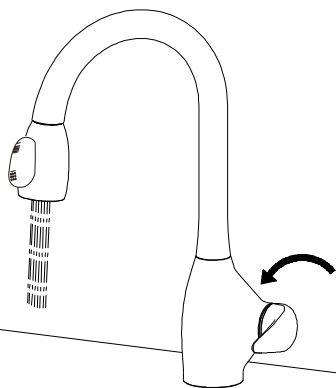
step 9



step 10



step 11



step 12

